

HYTSU[®] T&U[®]

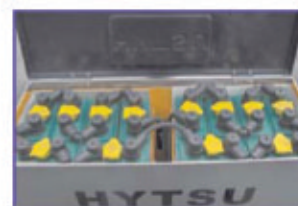
✓ 100 SERIES 2.0 TON



ELECTRIC PALLET TRUCK

XAE20 2000kg
XBE20 2000kg

- American CURTIS Electric Controller
- Reliable Import Hydraulic Pump
- Large Capacity BS Traction Battery
- European Drive Unit and DC Motor
- European Command Head



STANDARD SPECIFICATIONS

characteristics		1		Manufacturer		HYTSU GROUP					
		2		Model		XAE20 XBE20					
3		Load Capacity		kg/lb.		2000 / 4400					
4		Load Center		mm/inch		500 / 19.7					
5		Power Type				Battery					
6		Control Type				Walkie Ride-on (with platform and side-protector)					
dimensions		7		Standard Lifting Height		mm/inch 200 / 7.9 200 / 7.9					
		8		Fork Size		L*W*T		mm/inch 1150*160*55 / 45.3*6.3*2.2			
		9		Fork Overall Width		mm/inch		680/520 (26.8 / 20.5)			
		10		Overall Length		mm/inch		1680 / 66 2140 / 84.3			
		11		Overall Width		mm/inch		765 / 30 765 / 30			
		12		Fork Lowered		mm/inch		80 / 3.1			
		13		Overall Rear Height		mm/inch		1340 / 52.8			
		14		Rear Body Width		mm/inch		765 / 30			
		15		Rear Body Length		mm/inch		530 / 20.8 570 / 22.4			
		16		Rear Body Height		mm/inch		860 / 33.8			
		17		Handle Width		mm/inch		425 / 16.7			
		18		Turning Radius (Outside)		mm/inch		1380 / 54.3 1380 / 54.3			
19		Min. ground Clearance		mm/inch		25 / 0.98					
20		Basic Right Angle Stacking Aisle Width (Add load length and clearance)		mm/inch		1580 / 62.2 1580 / 62.2					
performance		21		Speed (Max)		Travel					
						with load		km/h		4	
		without load		km/h		4.5					
		Lifting/ Lowering		with load		mm/s		75			
without load				mm/s		90					
22		Gradeability		with load		%		5			
				without load		%		7			
weight		23		Total Weight		With Battery		kg/lb.		340 / 750 345 / 760	
						Without Battery		kg/lb.		140 / 310 145 / 320	
brake and wheels		24		Wheels		Number		Front/Rear		2 / 3 (poly)	
				Size		Front		Rear		φ 78*100	
		25		Axle base		mm/inch				1340 / 52.8	
26		Brake								Electric Wet Disk	
Control System		27		Battery and Charger		Voltage/Capacity		V/Ah.5hr		24V/210AH (12pcs*2V Single battery with 61*158*525mm)	
						Compartment Size		mm/inch		750*220*535 / 29.5*8.7*21	
						Charger				24V / 50A	
		28		Electric Motors		Driving Motor				24V / 0.9KW	
Lifting Motor								24V / 1.6KW			
29		Control System								CURTIS	

*NOTE: 1) Products and specifications are subject to change without notice.
 2) Products load chart graph and structure sizes dimensions are available in service manual.

